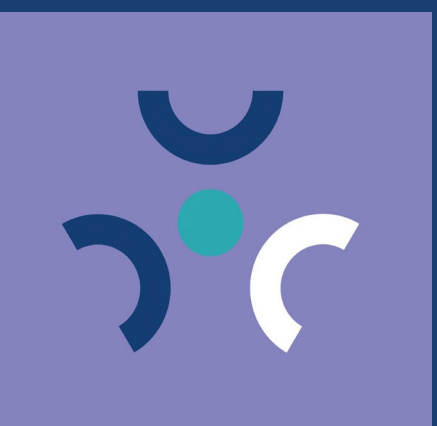
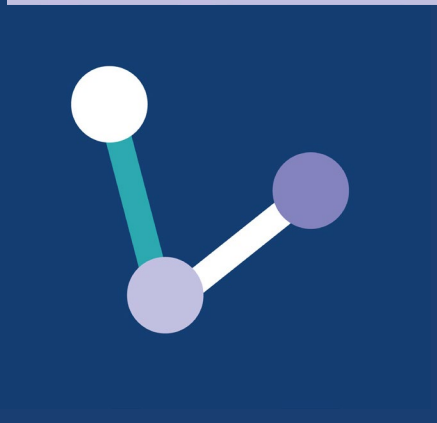


trainee award holder handbook



WELCOME

It's a pleasure to welcome you to the National Institute of Health and Care Research (NIHR) Academy; and the NIHR family. The NIHR Academy is at the heart of what we do. It includes all NIHR-funded people working in the NHS, universities and registered charities in England. It is a vibrant and unique research community that includes some of our most eminent health researchers.

To be an NIHR Academy member is to be a part of a group of important research leaders of the future, meaning NIHR members are the future of research. The NIHR is committed to developing your careers and constantly works to improve what it offers.

I have the wonderful opportunity to work with the members we support, and my job is to ensure all of our members are happy and go on to be successful. The NIHR tailors its training to meet these goals; by not only training you academically but preparing you for a longer-term research career and by listening to you and taking on your feedback to make your experience as a student or fellow as good as it can be.

I wish you the best of luck for the future and every success.

Professor Dave Jones

Dean for NIHR Academy

It is a great pleasure to welcome you to the NIHR School for Primary Care Research, a unique family dedicated to improving primary health care for patients through research excellence.

Since our inception almost a decade ago we have been committed to training and supporting the next generation of primary care researchers. Our multi-disciplinary focus provides the perfect learning environment that is strongly supported by the unique collaboration of the top nine English departments of primary care.

In addition to being a member of the wider NIHR Faculty you will also be able to access a wide range of resources to enhance your training and development through the School and your department. Each host institution has a named training lead to support your transition towards an independent academic career. You will work with leading primary care investigators who are committed to helping you develop as a primary care researcher.

I hope you enjoy your time as a NIHR SPCR student or fellow. Make the most of the available opportunities and we look forward to hearing about all of your future success stories.

Professor Christian Mallen

Director - NIHR School for Primary Care Research

CONTENTS

Welcome	
Overview	1
Capacity and development	2
Reporting	4
Communicating your research	5
Patient & public involvement and public engagement	6
Mentoring Scheme	7
Additional training and development	8
SPCR Annual Trainees' Event	9
The NIHR & Academy	10
NIHR Research Career Pathways	12
NIHR Academy members' meeting	14
NIHR Doctoral Research Training Camp	16
NIHR Visiting Speaker Awards	17
NIHR Short Placement Awards for Research Collaboration	18
Transdisciplinary Understanding on Research - primary care	19
Society for Academic Primary Care	21
NIHR Governance Structures	22
SPCR Open Access Policy and Process	23



Overview

Established in 2006, the NIHR School for Primary Care Research is a partnership between nine leading academic centres for primary care research in England. Bringing together academics and practitioners from across the country, the School collaborates on cutting edge, topical primary care studies that have an impact both at policy level and in general practices around the country. Our partners are based in primary care departments at the Universities of Bristol, Cambridge, Keele, Manchester, Newcastle, Nottingham, Oxford, Southampton and University College London.

In addition to conducting high profile research, we attract the best new researchers into our capacity programme and offer trainees support and networking opportunities through an extensive training and events programme.

With NIHR funding until 2026, the School aims to increase and improve research awareness in the sector, provide strategic leadership to support the development of primary care research and contribute to ongoing efforts to build research capacity amongst partners.

Our research complements other NIHR funding streams and work undertaken in NIHR funded infrastructure units. Studies encompass primary care and general practice, with some research at the interface between primary and secondary care.

Capacity and development

The School's research capacity and development programme aims to complement rather than replicate the training opportunities provided by the NIHR Academy and other funding agencies such as the Medical Research Council (MRC) and the Wellcome Trust.

We offer awards to remedy short-supply in areas of particular methodological importance to primary care research, for example, statistical expertise, health economics expertise and health psychology expertise. The opportunities take the form of PhD studentships, clinical and non-clinical fellowships.

The SPCR awards are advertised nationally and awarded after rigorous peer review. Applications are made centrally with candidates indicating their preferred host department. Each university offers specific training opportunities reflecting their own areas of expertise.

SPCR AWARDS

The 'Career Development' section of the SPCR website has links to the following awards:

<https://www.spcr.nihr.ac.uk/career-development/funding>

Primary Care Clinicians career progression awards

With an increasing demand for part-time academic training from clinicians who do not wish to lose clinical competencies, we have introduced part-time Primary Care Clinicians Career Progression awards.

Post Doctoral Fellowship awards

These are available to those with some previous research experience, such as those who have worked as research associates in primary care research. The aim of these fellowships is for the fellow to follow an independent research project, publish their research and prepare grant applications to secure future funding (e.g. an NIHR fellowship).

PhD/DPhil studentship awards

These awards are available to those with limited primary care experience (e.g. Masters-level training). The awards offer traditional project-specific training in shortage-areas of particular importance to primary care. They focus on non-clinical disciplines (e.g. medical statistics, health economics, health psychology). The award covers stipend, tuition fees, and funds for research, training and development.

Primary Care Clinicians PhD Programme

These Wellcome funded PhDs support Primary Care Clinicians to study for a PhD whilst maintain their clinician competencies. **Studentships will be awarded to clinicians of all disciplines working in UK primary care, for example: practice nurses; health visitors; dentists, primary care pharmacists; optometrists working in primary care and general practitioners.**

“Being the holder of an SPCR award has enabled me to establish a programme of research and be mentored by world-renowned primary care researchers. The close links with other institutions within the School has facilitated networking with leading researchers outside my department. All of which has been hugely enriching”



GUIDANCE FOR SPCR TRAINEES (PERSONAL AWARDS)

- The NIHR SPCR enters into a contract (sometimes known as a ‘Research Contract/Agreement’ with the organisation/university that is hosting your award, known as the ‘Host Employer’. You (the SPCR trainee) will have a contract with the host employer and your salary or stipend will be paid by them.
- Your award entitles you to NIHR Academy Member status within the NIHR Academy.
- When you are on leave from the programme, the necessary statutory payments will be managed by your host employer according to their usual local procedures.

ORCID

The School requires all applicants to supply an ORCID number.

The ORCID provides a digital identifier that distinguishes you from every other researcher. Individuals use this number with their name as they engage in research, scholarship, and engagement activities. ORCID numbers link publications through to ResearchFish.

To find out more and to register please follow this link <http://orcid.org>

Reporting

As an SPCR trainee, the SPCR requests a series of reports over the duration of your award:

Reporting stage	Timing
Progress	Every six months
Final	Final year on anniversary of award start
Post-award	Up to 5 years after completion of research, via Researchfish

Reports should refer to the proposal in your application where possible. The SPCR will send you the report form templates by email, 3-4 weeks before the completed reports are required. All reports are to be submitted electronically.

In addition, award holder are expected to:

- Attend the annual School trainees' meeting in September of each year of your award and present your research in progress
- Complete a final report at the end of your award with follow up on ResearchFish
- Inform the School's Communications Officer when you have a publication. All publications and presentations resulting from your award must be correctly attributed to the NIHR and SPCR (see section on Communicating your research)
- If your circumstances change - if you plan to move to part-time, you are on extended sick leave, maternity leave, or the dates of your award need to be amended, you must inform the School via your local Research Manager.

RESEARCHFISH

Researchfish is an online questionnaire system which captures the outcomes and impacts of funded research. NIHR research outputs will be requested annually throughout the duration of your award, and for up to 5 years after completion of the research. You will receive notification from the SPCR and Researchfish if your award is due to report through Researchfish.

The NIHR uses Researchfish to monitor the impact of funded research. The data submitted allows the NIHR to demonstrate the difference that your funded health research project has made to the health and wealth of the nation. It allows the NIHR to advocate continued research funding and evaluate the most effective ways to allocate it.

<https://www.nihr.ac.uk/documents/nihr-researchfish-guidance/12294>



Communicating your research

All researchers and trainees publishing or presenting work, in any form, are required by the NIHR to use the correct funding acknowledgement and disclaimer. This and other branding guidelines can be found on the School's website:

<https://www.spcr.nihr.ac.uk/research/SPCR-outputs>

In summary, the SPCR communications process ensures all news, publications, poster and PowerPoint presentations, press releases and attribute statements are known to and approved by the NIHR and DH before being published or released.

Press

Press releases are to include the NIHR boilerplate which is available on the website. Draft press releases must be sent, via the SPCR Communications Officer, to the NIHR for comment at least 14 days before they are released.

Twitter

When using Twitter to promote research please include the SPCR Twitter handle:
@NIHRSPCR

Open Access

The SPCR funds open access policy and the process can be found on page 28-29. OA fees for the principle publication from your research will be paid by the School, providing it has approved by the School Communications Officer beforehand and includes the NIHR acknowledgement and disclaimer.

Find out more about communicating your research on the SPCR website:

<https://www.spcr.nihr.ac.uk/research/SPCR-outputs>

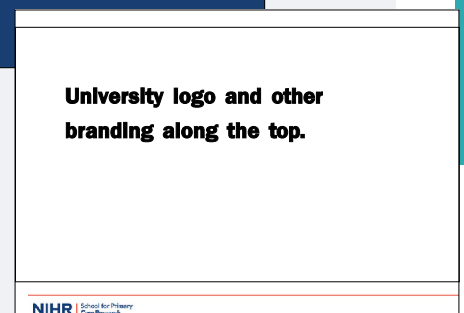
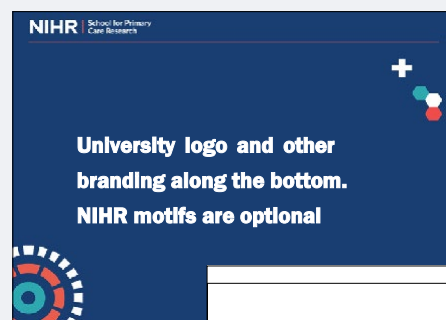
PRESENTATIONS

The PowerPoint and poster templates are designed to be used to represent all School funded work. These templates are available on the website:

<https://www.spcr.nihr.ac.uk/research/SPCR-outputs>

NIHR FUNDING STATEMENT AND DISCLAIMER:
“This study/project is funded by the National Institute for Health and Care Research (NIHR) School for Primary Care Research (project reference xxx).

The views expressed are those of the author(s) and not necessarily those of the NIHR or the Department of Health and Social Care.”



SPCR research paper/
news/poster/
PowerPoint presentation/
press release

SPCR
Communications
Officer

NIHR

Approval pre-publication/
presentation or press release
communicated to researcher



Patient and public involvement and public engagement

Patient and public involvement (PPI) entails research being carried out ‘with’ or ‘by’ members of the public, rather than ‘to’, ‘about’ or ‘for’ them. The word public can refer to (potential) patients, service users, carers as well as members of the public. While patient and public involvement focuses on a specific research project, programme or process, public engagement can connect with the public discussing science more generally. Public engagement encompasses the various ways in which activities and benefits of research can be shared with the public in a two-way process, and encourages researchers to listen and interact with the general public.

Involvement and engagement are integral to the School's research and research capacity development activities, and are informed by the NIHR's policy for patient involvement and the National Co-ordinating Centre for Public Engagement's policy.

Our purpose in working with patients, carers and the public is to improve the quality and relevance of the research that we fund, support the next generation of primary care researchers to involve and engage and to raise public awareness of our research in society.

RESOURCES

The [‘Patient & Public’](#) pages on the SPCR website are a source of further information about [patient and public involvement and public engagement](#). There are [practical tips](#) and [training opportunities](#) offered by organisations beyond the NIHR. [Case studies](#) of how researchers have involved and engaged the public with their research can be found in the Evidence section.



Each SPCR partner has a local PPI Lead who is able to support your Involvement plans:

University of Bristol

Julie Clayton & Victoria Wilson

University of Exeter

Beccy Summers

Keele University

Nicki Evans

University of Manchester

Becci Morris

University of Nottingham

Amy Bourton

University of Oxford

Polly Kerr

Queen Mary University London

Megan Clinch

University of Southampton

Sonia Newman

University College London

Rachael Frost & Elizabeth Murray

Mentoring scheme

The majority of our trainees are not medically qualified and as such cannot access mentoring opportunities provided by the Academy of Medical Sciences (AMS) or local Vocational Training Schemes (VTS). Recognising the need to provide support and mentorship to primary healthcare scientists, the Society for Academic Primary Care (SAPC) developed a scheme in 2013 to support early/mid stage researchers.

Rather than establishing a separate mentoring scheme to support primary healthcare scientists working within the SPCR, we work alongside the SAPC to provide additional capacity for SPCR trainees. This builds on the success of the SAPC mentoring scheme and provides independent mentoring opportunities within the School. The School has since set up many mentor-mentee relationships and received favourable feedback on the programme.

Mentors are often from different disciplinary backgrounds and from different departments. This facilitates growth in broader career progression aspects instead of focussing on the smaller aspects of developing as an academic.

One of the aims of the scheme is to help mentees to identify possible career pathways and to find career progression opportunities.

For more information contact the Senior Programme Manager.



BLOG: PERSPECTIVE FROM MENTEE AND MENTOR

The School's Mentoring Programme: A success story by Georgia Richards and Emma Palmer-Cooper. https://www.spcr.nihr.ac.uk/news/blog/SPCR_mentoring_programme_success

“Starting a PhD itself can be quite a daunting experience, but having someone who has been in your position to advise and bounce ideas off can be incredibly helpful.”

“The benefit of the mentoring programme was having a mentor from another Institute to talk to someone with a different perspective. We had some really useful discussions and I felt that I had support from someone who was impartial to my work and Institute which was helpful. My mentor was from a different discipline but there were similarities in terms of career path and being non-medical. To have someone who could relate to the challenges I faced and get advice was very helpful.”

Additional training and development opportunities

Event	When	Application/registration Deadline	Apply or register through
NIHR SPCR TRAINEES' EVENT	September	June	www.spcr.nihr.ac.uk/events
NIHR ACADEMY MEMBERS' MEETING	November	September	www.nihr.ac.uk/explore-nihr/support/academy.htm
TUTOR-PHC PROGRAMME (DOCTORAL STUDENTS)	May/June	December	www.spcr.nihr.ac.uk/career-development/tutor-phc
NIHR DOCTORAL TRAINING CAMP	July 3 days	February	www.spcr.nihr.ac.uk/career-development/NIHR-doctoral-training
NIHR SHORT PLACEMENT AWARDS FOR RESEARCH COLLABORATION (SPARC)	Open	Application opens October	www.spcr.nihr.ac.uk/career-development/nihr-sparc-award
NIHR VISITING SPEAKERS AWARD (VSA)	Open	September	www.nihr.ac.uk/explore-nihr/academy-programmes/training-within-nihr-infrastructure-and-nihr-schools

SPCR Annual Trainees' Event

The SPCR Annual Trainees' Event encourages networking, research development and enhances a sense of belonging to the School and to the wider NIHR infrastructure.

Trainees are given opportunities to learn about the scope of multidisciplinary research skills, methods and perspectives from lectures and discussions.

Small interactive sessions help to develop presentation skills in a facilitated and supportive environment. Trainees are also exposed to research from different disciplines and departments within the NIHR and the wider academic primary care environment.

BENEFITS OF ATTENDING

- Meeting new and existing members
- Networking with colleagues across the School
- Presenting work in supportive, constructive environment
- Increased understanding of cross disciplinary collaboration
- Introduced to further funding and training opportunities offered by the School and NIHR and beyond
- Learning about innovative research from peers.



The School encompasses research expertise from diverse areas such as sociologists,

health economists, anthropologists, statisticians, behavioural scientists, clinicians and public health practitioners, all converging at the event to discuss their work and potential future collaboration.

Trainees are introduced to a variety of different patient and public involvement and engagement methodologies, influencing the integration of these elements in their own studies.

“A really fantastic event - a great opportunity to see the variety of research being conducted and gave me plenty of food for thought for my own research. The biggest impact for me was the opportunity to network and meet the trainees in such a supportive environment.”

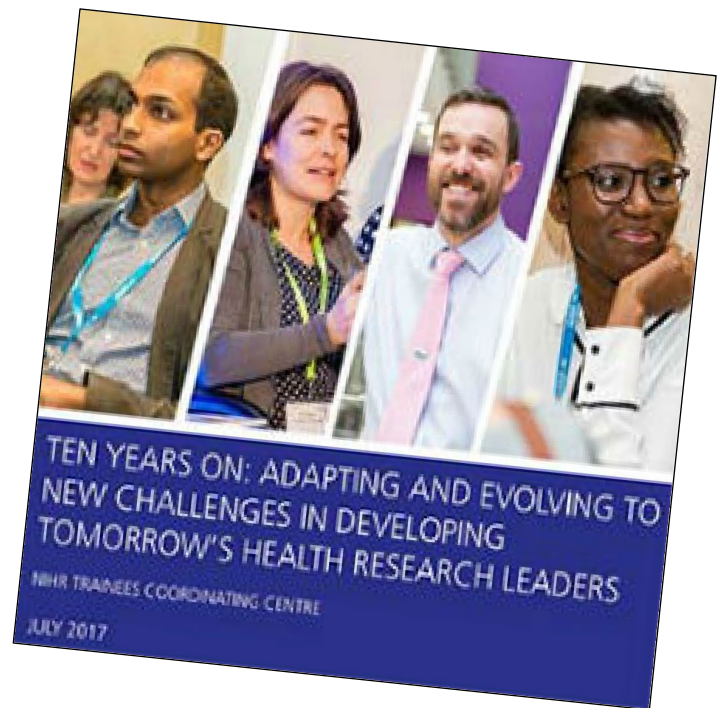
“The annual SPCR Trainees' Event is an excellent forum to meet bright and enthusiastic researchers from departments within the School.”

“The event was very interactive, informing and inspiring.”

The NIHR & Academy

The National Institute for Health and Care Research (NIHR) is a large multi-faceted and nationally distributed organisation. It is funded through the Department of Health and Social Care to improve the health and wealth of the nation through research.

In 2016 the NIHR initiated a strategic review of training within NIHR to review the past and look proactively at future training needs. The report from the review synthesises and reviews the evidence from the last 10 years, identifies new and evolving challenges, and sets out a vision underpinned by a series of recommendations.

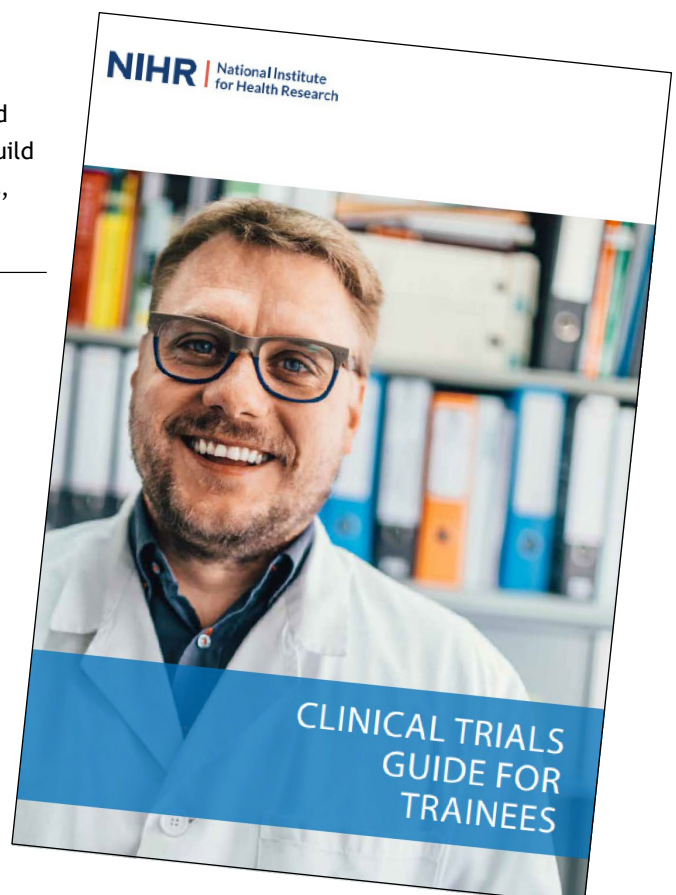


NIHR PERSONAL AWARDS AND IMPLEMENTATION PLAN

The NIHR Academy makes training awards to researchers whose work focuses on people and patient-based applied health research. Research training is funded in order to build a leading NHS Research Faculty, develop research careers, research leaders and collaborators. Find out more here: <https://www.nihr.ac.uk/explore-nihr/academy-programmes/fellowship-programme.htm>

CLINICAL TRIALS GUIDE FOR TRAINEES

The NIHR Academy have developed guidance to support NIHR trainees interested in getting involved in clinical trials. The resource supports individuals interested in pursuing a research career that involves the delivery of clinical trials. The booklet is the outcome of the first stage of the project to determine which questions aspiring trialists need answering before starting their journey into clinical trials. <https://www.nihr.ac.uk/researchers/apply-for-funding/how-to-apply-for-career-development-support/Documents/Clinical-Trials-Guide.pdf>



NIHR RESEARCH DESIGN SERVICE

Research Design Service (RDS) East Midlands (EM) provides support to those preparing research proposals for submission to peer-reviewed funding competitions for applied health or social care research. Find out more: <https://www.rds-eastmidlands.nihr.ac.uk/>

TRAINING AND CAREER DEVELOPMENT WEBINARS

The NIHR Research Design Service hold regular webinars on current topics of interest to NIHR trainees.

<https://www.rds-eastmidlands.nihr.ac.uk/nihr-training-and-career-development-webinar-channel>

BE PART OF RESEARCH

Our Be Part of Research campaign encourages patients, carers and the public to get involved in research. The 'Be Part of Research' campaign is ongoing throughout the year with a website and related resources.

The website replaces the earlier 'UK Clinical Trials Gateway'. Find out more: <https://bepartofresearch.nihr.ac.uk/>



WAYS YOU CAN PROMOTE THE NIHR

As a trainee there are some things you can do which collectively can make a big contribution in raising awareness of the NIHR:

- Tell your colleagues that you are funded or supported by the NIHR
- Include your NIHR award title wherever possible
- Share NIHR news with your colleagues and associates

The Health Foundation toolkit for communicating your research:

<https://www.health.org.uk/collection/communications-health-research-toolkit>

NIHR RESEARCH CAREER PATHWAYS

PRE-DOCTORAL

DOCTORAL

FELLOWSHIPS FOR ALL

NIHR Fellowships, NIHR Research Professorships and other awards

Pre-doctoral Fellowship

Doctoral Fellowship

HEALTHCARE PROFESSIONALS (NON-DOCTORS/DENTISTS)

HEE/NIHR Integrated Clinical Academic Programme

HEE/NIHR Pre-doctoral Clinical Academic Fellowship

HEE/NIHR Clinical Doctoral Research Fellowship

DOCTORS AND DENTISTS

NIHR Integrated Academic Training Programme

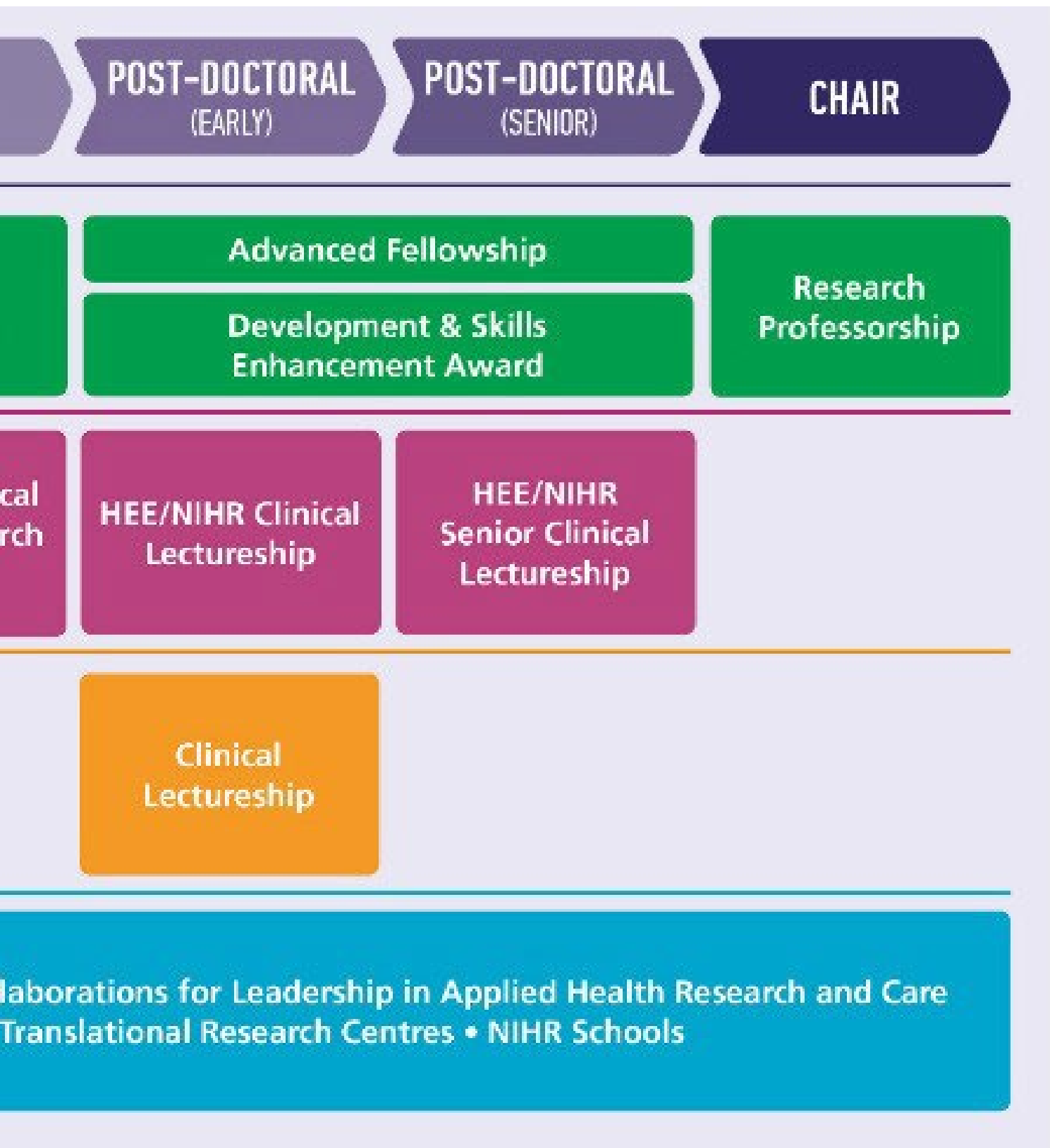
In-Practice Fellowship

Academic Clinical Fellowship

RESEARCH TRAINING FOR ALL

Through NIHR Infrastructure & Schools

Biomedical Research Centres • Collaborative Research Centres
• Patient Safety Research



NIHR Academy Members' Meeting

OVERVIEW

The NIHR Academy runs an annual two-day national training meeting for all NIHR funded trainees.

The event allows trainees to present posters of their work, to network and meet other trainees, to share experiences, take part in workshops and learn more about the NIHR. The meeting also includes inspirational presentations from senior NIHR Health Researchers.

PROGRAMME AIMS:

- To provide education and training in healthcare research leadership
- To broaden the skill base of participants and enable them to develop their own leadership role in their primary care research careers - knowledge of current leadership theories, scenario planning, media skills
- To enhance lifelong learning skills and personal development and the use of these in their leadership of primary care research - networking with current leaders and own peer group, coaching skills, insight into own developmental needs and ways to fulfill these
- To broaden the participants' knowledge of the current leaders and awareness of the position of healthcare research both nationally and internationally.

“The event runs over two days and is jam packed with seminars, workshops, poster presentations, and ample networking opportunities. It was a buzzing atmosphere with an abundance of material covered, and if you are an NIHR trainee and haven't gone yet, we recommend you look into it for next year!”





NIHR WEBINARS

The NIHR Webinar series is organised by the NIHR Academy and Research Design Service for current and aspiring NIHR Academy Members and covers a range of topics to help early career researchers develop their knowledge and expertise. Previous webinars include:

- Writing for publication
- Further your research career in clinical trials
- CRN study support service
- Getting your finances right - from application to the end of your project.

To access these recordings, visit the webinar channel:

<https://www.rds-eastmidlands.nihr.ac.uk/nihr-training-and-career-development-webinar-channel>



NIHR Doctoral Training Camp

OVERVIEW

The NIHR Infrastructure Doctoral Training Camp is a three-day intense annual event for NIHR Trainees from the Biomedical Research Centres (BRCs), Applied Research Collaboration (ARC)*, Patient Safety Translational Research Centres (PSTRCs) and the Schools of Primary Care Research, Social Care Research and Public Health Research.

The challenging event offers workshops, presentations from guest speakers who have established research careers, and poster presentations and opportunities for networking and mentoring. This is an important opportunity for early career researchers and attendance is by competition through the School in February each year.

PROGRAMME DETAILS

The programme alternates between a focus on 'developing communication research skills' one year and 'developing a funding application' the next.

Trainees work in small, mixed professional groups over three days to prepare and present to a panel of experts. Each group is appointed an experienced health researcher as a mentor and have access to an office of experts.

<https://www.spcr.nihr.ac.uk/career-development/NIHR-doctoral-training>

“It was a fantastic opportunity to learn new skills and network with other researchers from all over the country, from different disciplines and a wide range of research interests. A really valuable and enjoyable experience which has given me the confidence and skills to contribute to future funding applications.”

“Despite having never met before and coming from diverse research backgrounds including lab based research, cardiology, neonatal care, end of life care and epidemiology, we quickly bonded as a team and brainstormed ideas.”

NIHR Visiting Speaker Awards

The NIHR Visiting Speaker Award (VSA) is an award was developed in collaboration with one of our NIHR Infrastructure Trainees.

Trainees in the NIHR Infrastructure are invited to apply for up to £500 to support the costs of going to present their work in another part of the NIHR Infrastructure. The award is specifically designed to encourage networking and to enhance the trainees' experience by presenting their research

AIMS

The NIHR IVSA aims to provide opportunities for different parts of the NIHR Infrastructure to come together collaboratively and allow individuals to benefit from being part of something larger than their own local environment. We will be looking for the award to impact the trainee's training experience and future career.

ELIGIBILITY

The scheme is open to early-stage research trainees (Masters, PhD or early post-doc) who must be based at a part of the NIHR Infrastructure with a remit to build capacity (Biomedical Research Centre (BRC), Applied Research Collaboration (ARC), Patient Safety Translational Research Centre (PSTRC) or the NIHR School for Primary Care Research (SPCR) and Public Health Research (SPHR).



Short Placement Awards for Research Collaboration (SPARC)

Collaboration and exchange are at the heart of the National Institute for Health and Care Research's commitment to building capacity. The NIHR is home to a network composed of world-class facilities offering training, mentorship and career development opportunities to our trainees based in the NIHR Infrastructure.

The SPARC scheme supports early-stage researchers within the NIHR Infrastructure to spend time in other parts of the NIHR to train in a specific technique, learn a new skill or to collaborate with other researchers.

WHO CAN APPLY?

The scheme is open to all NIHR trainees supported by an infrastructure award. The applicant must be based within a part of the NIHR Infrastructure with a remit to build research capacity: Biomedical Research Centres (BRC), Applied Research Collaboration (ARC), Patient Safety Translational Research Centres (PSTRC), the NIHR School for Primary Care Research and the NIHR School for Public Health Research.

WHAT IS FUNDED?

You can apply for an award of up to £5,000 through a competition managed by the NIHR. Funds can be used to cover the expenses of working from another institution and may include travel, accommodation and other subsistence costs. Your salary or stipend will continue to be supported by your home institution. The award does not cover any research costs at the host institution.

WHAT ARE THE BENEFITS OF THE PLACEMENT?

“From a personal development perspective I have found the placement to be excellent. It gave me the chance to strengthen some embryonic relationships and, as a PhD student, helped build confidence to reach out and develop my own network, which (as I am often told by my supervisors) seems a key part of developing an academic career.” Douglas Hardman, PhD student, University of Southampton (2018)

“Another advantage of this scheme is having the opportunity to see your own research through a slightly different disciplinary lens. I’m a social scientist by background, asking questions about health and social care. The PSSRU at the School for Social Care Research is multi-disciplinary, but with a particular focus on economics and policy. Through the discussions I had with staff within the school, and the seminar I gave about my PhD work, I was able to think about my work from a slightly different angle.” Gemma Spiers, PhD student, Newcastle University (2018)

Transdisciplinary Understanding on Research – Primary Health Care (TUTOR PHC)

OVERVIEW

TUTOR-PHC is a one-year, pan-Canadian, interdisciplinary research capacity building program that has been training primary and integrated health care researchers and decision-makers from family medicine, nursing, psychology, epidemiology, social work, education, policy and many other disciplines since 2003. The SPCR has a competition in January each year to select a candidate for its sponsored place.

Below: Kelly Birtwell presenting her 45 second elevator pitch to a decision maker (2019).



PROGRAMME DETAILS

The programme includes:

- An onsite 3-day symposium in Canada
- Two 3-week online research skill development workshops - June and November
- Two 7-8 week online interdisciplinary discussion groups (September to November and January to March)
- Autumn - present your own research project to peers and receive interdisciplinary feedback
- Winter - work with an interdisciplinary team to create a primary health care research project
- Trainees accepted to the program will have their research supervisor participate in aspects of the program.
- At the end of the program trainees will be able to complete an interdisciplinary primary health care research proposal.



EXTRACTS FROM KELLY BIRTWELL'S BLOG

"The next three days were a very intensive mix of workshops, lectures and exercises that built on the pre-reading (there is a lot of reading!). We began by exploring the meaning of different terms such as primary care and primary health care, as well as multidisciplinary, interdisciplinary, and transdisciplinary. The 'Bell-ringer exercise' allowed us to meet each of the mentors and hear them talk about their discipline and what it brings to a research project. These sessions really opened my eyes to the different ways that researchers with diverse professional backgrounds can work together. We also had chance to talk about our own research projects and hear the perspectives of our fellow trainees- their questions and suggestions. This helped to broaden my thinking and consider different ways to take my research forward.

" Taking part in the TUTOR-PHC programme has already been an invaluable experience and I am looking forward to the upcoming online sessions and further engagement with my fellow trainees and mentors. I am also hoping that some of these connections may turn into real collaborations and applications for funding in the future."

Kelly Birtwell, 2019

Society for Academic Primary Care

SAPC PHOCUS GROUP

The Society for Academic Primary Care (SAPC) established the Primary Health Care Scientists (PHoCuS) group in 2012 to understand and address the career development needs of members who don't come from a medically qualified background. Former SPCR trainee from the University of Southampton, Lily Lai, spoke about the value of group meetings:

“I didn't know there were quite so many 'non-GPs' until I came to one of the Primary Healthcare Scientists (PHoCuS) group meetings back in 2012. The PHoCuS group was set up as a way of offering a single support scheme to this multidisciplinary group within SAPC. Since this time, the group has grown considerably – Initially hosting one annual meeting at the national SAPC conference to now organising a range of activities which are led by PHoCuS members. These activities are designed to promote interdisciplinary engagement, to offer further opportunities for collaboration and are designed to be as inclusive as possible to meet the needs of this varied group.”

More about the group can be found here: <https://sapc.ac.uk/article/primary-health-care-scientists-phocus>

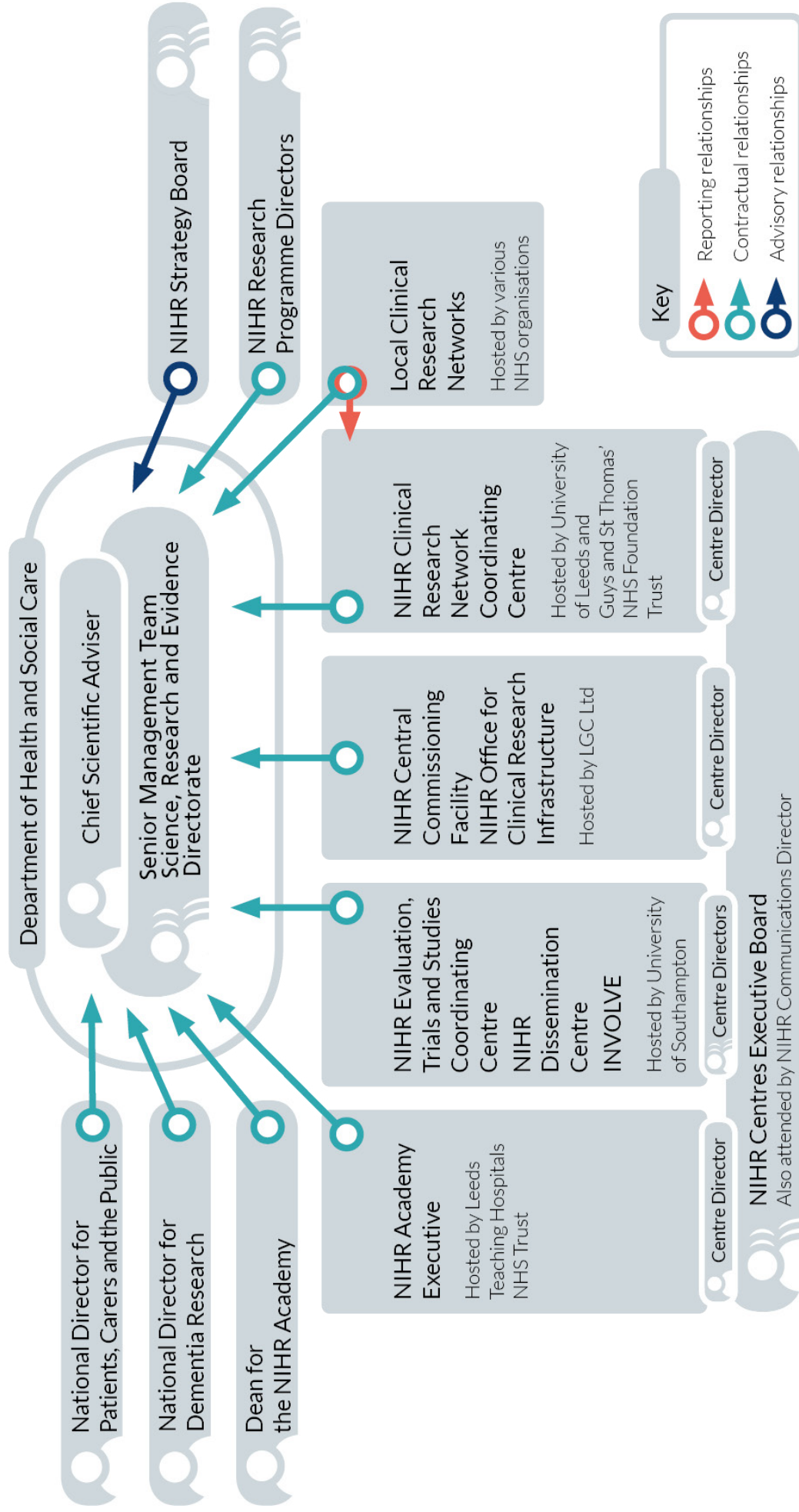
SAPC SPECIAL INTEREST GROUPS

SAPC hosts and supports a number of Special Interest Groups (SIGs). SIGs are an important part of our work to achieve impact through collaboration.

- Behaviour change
- Conversation analysis
- Dermatology
- Digital technologies in Primary Care
- Education research
- Genetics
- Health literacy
- Learning disability research group
- Palliative care
- Patient and public involvement and participatory research approaches in academic primary care
- Personal care
- Physical activity / exercise as medicine
- Sexual and reproductive health
- The self in primary care

More about SAPC's special interest groups can be found here: <https://sapc.ac.uk/special-interest-groups>

NIHR Governance Structures



SPCR Open Access Policy and Process

Open Access (OA) is a publishing model in which peer-reviewed articles are made freely available online providing the work is properly attributed to the author and the author's control over the integrity of their work is preserved. Open access is required on all NIHR-funded publications and researchers must seek to publish their research outputs in a peer-reviewed journal that is compliant with the NIHR OA policy.

CAPACITY AWARDS

The School will fund the primary paper from a capacity award.

To be eligible for the funding the output must accurately acknowledge the SPCR as funder and must carry the correct disclaimer.

- Any underspend on the award must be used in the first instance.
- Any uncommitted or underspend in the partner administration fund should be prioritised on OA costs.
- The possibility of obtaining institutional OA funds should be investigated.
- The School will provide additional funding once the points listed above have been exhausted.

Note: This funding does not apply to Internship funding, or Seedcorn / Bridging funding; and is only available until 31st March 2026. Further availability is dependent on the renewal of SPCR funding by NIHR.

If you wish to access Open Access funds, or clarification is needed on any of the above points, please speak to your institute's Research Manager, who will liaise with SPCR.

COMPLYING WITH THE NIHR OA POLICY

Open access is required on all NIHR-funded publications. The main publication that is funded (in-part or in whole) is processed according to the Creative Commons Attribution (CC-BY) Licence. If this is not possible then the authors must reconsider the appropriateness of the original publication, as well as how to comply with the point above. If a project is co-funded by the NIHR SPCR and another funder/s, the majority funder is expected to pay the Article Processing Charge.

WHICH ARTICLES DOES THE POLICY APPLY TO?

Articles from research and capacity awards submitted on or after 1 June 2022. The principal research article generated from the award must be published under Gold OA (i.e. one which provides immediate open access on the publisher's website) unless, under exceptional circumstances, permission is granted by the SPCR directorate to publish elsewhere.

HOW TO COMPLY

Articles must carry:

- A data sharing statement describing how the underpinning research data can be accessed. Where there are reasons to protect access to the data, for example commercial confidentiality or sensitivities around data derived from potentially identifiable human participants, these should be included in the statement.
- Appropriate acknowledgment of NIHR, unique award identifier and disclaimer in the funding or acknowledgments section of the manuscript and included in the funding information requested by the publication on submission. All manuscripts must be submitted to, and approved by, the SPCR Programme Officer prior to submission for publication, or at the very latest, after acceptance by a journal.

WHERE ELSE SHOULD A COPY OF THE MANUSCRIPT BE SUBMITTED?

A copy of the final manuscript from research supported by the NIHR must be deposited with PubMed Central (PMC) and Europe PMC by the official final publication date, without any embargo period. All articles must be long-term archived and freely discoverable through PMC and Europe PMC to those that may wish to read, share and reuse the outputs of NIHR funded research, including patients, service users, carers and the public. This includes machine readability and accessibility to ensure full utility of NIHR funded articles.

NIHR OPEN RESEARCH

NIHR Open Research publishes scholarly articles and other research outputs (e.g. final reports) reporting any basic scientific, translational, applied and clinical research that has been funded (or co-funded) by the NIHR. All research, including clinical trials, systematic reviews, software tools, method articles, and many others, is welcome and will be published irrespective of the perceived level of interest or novelty; confirmatory and negative results, as well as null studies are all suitable. All articles are published using a fully transparent, author-driven model; the authors are solely responsible for the content of their article. Invited peer review takes place openly after publication, and the authors play a crucial role in ensuring that the article is peer-reviewed by independent experts in a timely manner. NIHR Open Research is an Open Research platform: all articles are published open access under a CC-BY license; the publishing and peer review processes are fully transparent; and authors are asked to include detailed descriptions of methods and to provide full and easy access to the source data underlying the results in order to improve reproducibility.

SCHOOL FOR PRIMARY CARE RESEARCH

Established in 2006, the NIHR School for Primary Care Research is a partnership between nine leading academic centres for primary care research in England. The School brings together academics and practitioners from across the country to collaborate on cutting edge, topical primary care studies that have an impact both at policy level and in general practices around the country. In addition to conducting high profile research, we attract the best new researchers into our capacity programme and offer trainees support and networking opportunities through an extensive training and events programme. Our mission is to increase the evidence base for primary care practice, and to increase research capacity in primary care.

WEBSITE

www.spcr.nihr.ac.uk

TWITTER

@NIHRSPCR