

August 2024

NIHR | School for Primary Care Research

[About Us](#)

[Research](#)

[Career Development](#)

[PPIE](#)

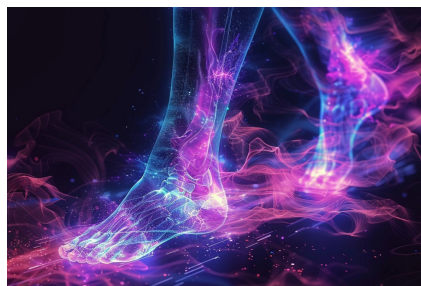
[News and Events](#)

Publications Special Edition

A meta-ethnography of the factors that shape link workers' experiences of social prescribing. Amadea Turk et al writes for BMC Springer Nature
SPCR funding project reference: [529](#)



AI-guided deep vein thrombosis diagnosis in primary care: protocol for cohort with qualitative assessment. Kerstin Nothnagel et al writes for BJGP Open
SPCR funding project reference: [C077](#)



The first 100 days after childbirth: cross-sectional study of maternal clinical events and health needs from primary care. Holly Christina Smith et al writes for BJGP Open
SPCR funding project reference: [452](#)



Effectiveness of complex behaviour change interventions tested in randomised controlled trials for people with multiple long-term conditions (M-LTCs): systematic review with meta-analysis. Tasmin Rookes et al writes for BMJ Open

SPCR funding project reference: [572](#)



General practitioner workforce sustainability to maximise effective and equitable patient care: a realist review protocol. Sophie Park et al writes for BMJ Open

Open

SPCR funding project reference: [593](#)



Safety outcomes following COVID-19 vaccination and infection in 5.1 million children in England. Emma Copeland et al writes for Nature Communications.

SPCR funding project reference [622](#)



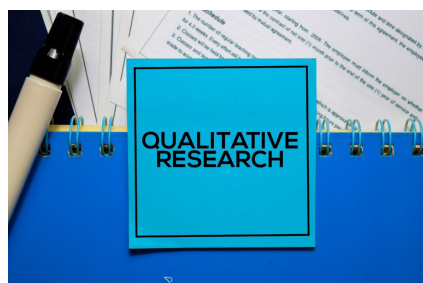
Blog post: [Safety of COVID-19 vaccination in children](#)

The hidden work of general practitioners: An ethnography. Sharon Spooner et al writes for Science Direct.
SPCR funding project reference [573](#)



Patient safety in remote primary care encounters: multimethod qualitative study combining Safety I and Safety II analysis. Sara Shaw et al writes for BMJ Journals.

SPCR funding project reference [594](#)



Association between patient ethnicity and prostate cancer diagnosis following a prostate-specific antigen test: a cohort study of 730,000 men in primary care in the UK.

Sarah Bailey et al writes for BMJ Journals. SPCR funding project reference [511](#)



Living with unsettled baby behaviours: Qualitative interview study exploring parental perceptions and experiences of help-seeking.

Ingrid Muller et al writes for Wiley Online. SPCR funding project reference [536](#)



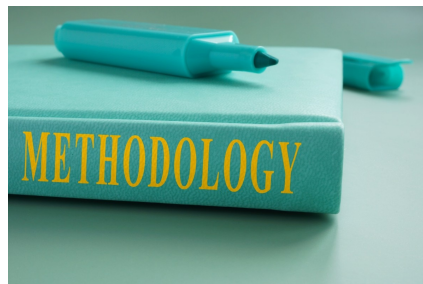
The Co-Occurrence of Polypharmacy and Unmet Needs for Social Care in Older People: A Systematic Review.

Laurie Davies et al writes for Hindawi. Laurie Davies was funded by the SPCR PhD Programme



Defining usual care comparators when designing pragmatic trials of complex health interventions: a methodology review.

Katrina Turner et al writes for Trials Journal. SPCR funding project reference [510](#)



NSAID prescribing and adverse outcomes in common infections: a population-based cohort study.

Beth Stuart et al writes for BMJ Open. SPCR funding project reference [486](#)



Barriers and facilitators of self-management of diabetes amongst people experiencing socioeconomic deprivation: A systematic review and qualitative synthesis. Megan Armstrong et al writes for Wiley Online Library. SPCR funding project reference [539](#)



The long-term impact of vaginal surgical mesh devices on pain clinic and psychological service referrals, anti-inflammatory testing and pelvic scans in UK primary care: A cohort study with the Clinical Practice Research Datalink. Emily McFadden et al writes for BJOG. SPCR funding project reference [438](#)



A Snapshot of COVID-19 Vaccine Discourse Related to Ethnic Minority Communities in the United Kingdom Between January and April 2022: Mixed Methods Analysis. Nazifa Ullah et al writes for JMIR Publications. Nazifa Ullah was funded by the SPCR Undergraduate Student Internship Programme



Recruitment and retention of staff in rural dispensing primary care practice: a qualitative inquiry. Sinead TJ McDonagh et al writes for BJGP Open. Sinead McDonagh was funded by School for Primary Care Research Postdoctoral Fellowship.



Impact of research activity on performance of general practices: a qualitative study. Sophie Park et al writes for BJGP Open. SPCR provided funding for additional PPI work for the (ARAPAHO) project.



Communications



We're on LinkedIn

Did you know that the [NIHR SPCR is on LinkedIn?](#)

Please give us a follow if you're on there!



Three Schools' Mental Health Programme Newsletters

Find out what's happening with the [Three Schools' Mental Health Programme](#). Sign up to the quarterly newsletter, take a look at the [December edition](#).

[Subscribe to the Three Schools' newsletter here](#)

Subscribe to the SPCR newsletter

Details of publications and dissemination work, related to SPCR funded research, can be shared with the School by emailing Heather Gibbs: h.g.gibbs@keele.ac.uk

You are receiving this email because you signed up for our newsletter.

Visit us on social media:



If you want to unsubscribe, [click here](#).

